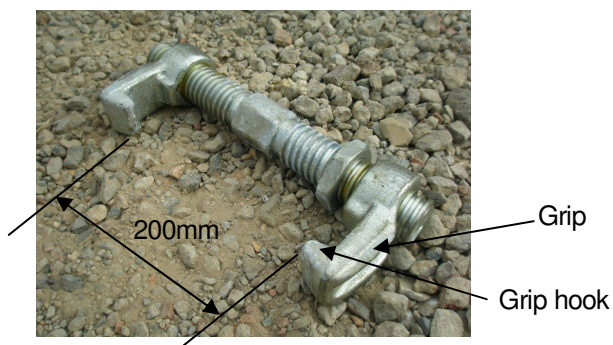
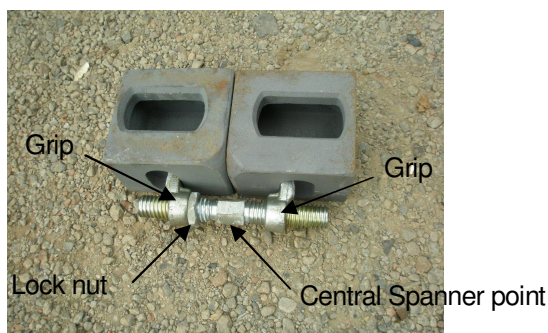


Operating Instruction for Container Bridge Clamps (Part Number CHBC1)

1. Open bridge clamp by twisting shaft until a minimum distance between grips of approx 200mm is achieved.



2. Insert bridge clamp across adjacent corner castings as shown, ensuring grip hooks are inside corner casting.



3. Rotate shaft to tighten grips using central spanner point.
4. Tighten lock nut up to adjacent grip to ensure clamp cannot loosen by accident.